



CALIBRATORS & HART COMMUNICATORS

Temperature Calibrators

Highly portable and fast precision thermometers. Dry-block and liquid bath temperature calibrators: 5 series, with more than 25 models and temperature ranges from -100 to 1205°C. All featuring portability, accuracy, speed and advanced documenting functions with JofraCal calibration software.

RTC Series - Reference Temperature Calibrator

With DLC system for perfect temperature homogeneity in the insert - even when calibrating large sensors or many sensors at a time. High accuracy: up to $\pm 0.04^\circ\text{C}$ (RTC 700: up to $\pm 0.11^\circ\text{C}$) with use of the external reference sensor.

- RTC-156: -30 to 155°C
- RTC-157: -45 to 155°C
- RTC-158: -22 to 155°C, bath dry-block/liquid
- RTC-159: -100 to 155°C, ultra-cooler
- RTC-250: 28 to 250°C, bath dry-block/liquid
- RTC-700: 33 to 700°C



PTC Series - Professional Temperature Calibrator

With active dual zone block, intelligent reference sensors, new STS-150 reference sensor, USB connection, easy-to-read colour display and extremely user-friendly navigation. High accuracy: down to $\pm 0.06^\circ\text{C}$ ($\pm 0.11^\circ\text{F}$) using the external reference sensor.

- PTC-125: -90 to 125°C (-130 to 257°F)
- PTC-155: -25 to 155°C (-22 to 311°F)
- PTC-350: 33 to 350°C (91 to 662°F)
- PTC-660: 33 to 660°C (91 to 1220°F)



ITC Series - Industrial Temperature Calibrator

The ITC series employs the slim and rugged design of the CTC series. This series also features the intuitive user interface, the clear LCD display, and the functionality that is used in the successful CTC series. 12-month accuracy to $\pm 0.18^\circ\text{C}$.

- ITC-155A: -23 to 155°C (-9 to 311°F)
- ITC-320A: 50 to 320°C (122 to 608°F)
- ITC-650A: 50 to 650°C (122 to 1202°F)



CTC Series - Compact Temperature Calibrator

An economical solution for a timesaving and reliable true temperature calibrator. Ideal for on-site use. Save time with the automatic step function and the fully automatic thermo switch test. 12-month accuracy to $\pm 0.4^\circ\text{C}$.

- CTC-140A: -17 to 140°C (-1 to 284°F)
- CTC-320A: 33 to 320°C (91 to 608°F)
- CTC-320B: 33 to 320°C (91 to 608°F)
- CTC-650A: 33 to 650°C (91 to 1202°F)
- CTC-650B: 33 to 650°C (91 to 1202°F)
- CTC-1200A: 300 to 1200°C (572 to 2200°F)



ETC Series - Easy Temperature Calibrator

This may be the fastest dry-block temperature calibrator on the market. Complete a dual point test in less than 10 minutes. The small physical size makes it fit the tool box, can go anywhere, and be used at installations difficult to reach. 12-month accuracy to $\pm 0.5^\circ\text{C}$.

- ETC-125A: -10 to 125°C (14 to 257°F)
- ETC-400A: 28 to 400°C (82 to 752°F)
- ETC-400R: 28 to 400°C (82 to 752°F)



Reference Temperature Sensors

Features

- Wide temperature range of -100 to 700°C
- Long-term burn-in procedure up to 650°C
- Perfect for dry-block calibrators
- Special short sensor for short and sanitary applications
- Accredited certificates up to 650°C as standard delivery
- High system accuracy of $\pm 0.04^\circ\text{C}$ when combined with RTC calibrators



Our reference sensors can be used as your daily working reference sensor in laboratory or field calibration applications. A large selection of types are available, including; straight, 90° angle, 4mm or 1/4".

The superior design and specifications combined with a long history of reliability and low drift have made the STS probes the working standard in many EN/IEC 17025 accredited laboratories worldwide.

Digital Temperature Indicator & Reference Sensor

Features

- Large temperature range: -200 to 2500°C
- High accuracy: DTI050: $\pm 0.012^\circ\text{C}$
- DTI050 + STS sensor: $\pm 0.04^\circ\text{C}$
- High resolution: 0.001
- Standard RS232 interface
- Standard calibration software included: JofraCal
- Connect Smart probe - probe parameters read directly

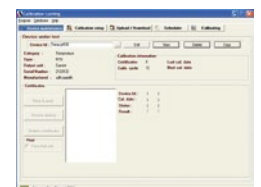


This simple to use instrument offers great flexibility, being able to work with both 'smart' and standard temperature sensors. A fast response time ensures precise monitoring of temperature stability and low drift reduces uncertainty of measurement between calibration intervals. The DTI050 may also handle signals from 4-wire RTD's, TC's and thermistors.

JofraCal Calibration Software

Features

- Free of charge with any calibrator order
- Reduce operator time by automating calibration procedures
- Comply with quality systems by documenting results and procedures
- Calibrate up to 24 sensors simultaneously
- Use with our temperature, signal, and pressure calibrators
- Reduce sources of error by using stored procedures and set-ups



JofraCal calibration software provides an entirely automatic calibration of sensors and a semi-automatic calibration of the complete process loop by means of a PC. The software handles the comparison between the process readout value and the reference value, controls the complete calibration procedure, stores the results, and provides a calibration audit trail through hard-copy certificates.



CALIBRATORS & HART COMMUNICATORS

XP2i Digital Pressure Gauge

Features

- Now available to 15,000psi
- Easy to use
- Accuracy not affected from -10 to 50°C
- Replaces 5 or more digital test gauges
- Fast pressure safety valve (PSV) mode
- Marine grade enclosure resists corrosion



It's not like other pressure gauges. With the XP2i's "of reading" specs, your accuracy is always better than a 0.1% of span gauge, at any pressure under full scale. Ultra rugged, intrinsically safe, digital test gauge with 0.1% of reading, 0.02% of full scale, or 0.05% of full scale accuracy levels.

Every XP2i comes with an ISO 17025 calibration report - NIST traceable, A2LA accredited, internationally recognised by ILAC.



mAcal Loop Calibrator

Features

- Measure voltage from 0 to 45VDC with ± 0.5 VDC
- 200 hours of life using 4xAA batteries
- Push button to switch between mA and % reading
- Source and measure current to 24mA with $\pm 0.05\%$ of full scale
- Special fixed steps stored for easy tests of linear and flow transmitters or valve positioners
- All input and output connectors are placed away from the display and keyboard for best operation conditions
- Manual or automatic steps with 10 or 30 seconds between steps



The mAcal loop calibrator is designed specifically for 2-wire transmitter loops with 4 to 20mA signals. The large display clearly shows milliamp (to 0.001 mA), percent, voltage, or seconds, plus error codes for loop mismatch, reverse polarity, and over range.

HPC600 - Handheld Pressure Calibrator

Features

- High accuracy: $\pm 0.020\%$ of reading
- Various ranges: -0.82 to 2, 10 or 20 bar
- High accuracy temperature sensor
- mA Loop calibrator
- Storage of 5 setups
- True field calibration: fully temperature compensated



The new HPC600 features a built-in electrical pump capable of generating up to 20 bar at the single touch of a button. The accuracy of the HPC600 calibrator is specified in % of reading to ensure an even better accuracy and more applicable pressure range. The HPC600 is temperature compensated from -10 to 50°C for on-site operations. It is a truly superior pressure calibrator for laboratory and field use, bringing laboratory accuracy into the field.

ASC-400 Multifunction Calibrator

Features

- Large full colour display
- Advanced simplicity user interface
- Simultaneous read-back and fast RTD simulation
- Connect an RTD to use as a high accuracy thermometer using "True Ohm" technology
- Full numerical keypad with cursor and function keys
- Recall saved tasks for both upper & lower windows
- Fuseless protection
- Read and source RTD, thermocouple, current, voltage, frequency, resistance, and pulse train output
- Calibrate temperature when combined with a dry block calibrator



Our multifunction process calibrator combines all your favourite features such as % error calculation, scaling, leak-testing, and switch calibrating into one multifunction process calibrator.

PK II - Deadweight Tester

Features

- Accuracy to 0.015% of reading
- Ranges to 30psi
- Small incremental weight sets provide fractional output pressure
- Available in psi, g/cm², bar, mbar, kPa, inH₂O, cmH₂O, and mmHg



This floating ball type pneumatic deadweight tester is engineered to offer user-friendly, safe operation. Featuring a self-regulating design, that allows automatic stabilisation of weights, eliminating the need to adjust input pressure.

- Local gravity and standard gravity (980.665gals) versions available
- Overhung weight carrier reduces side thrust and friction
- Rugged ceramic measuring ball and optional tripod

ABB Handheld HART Communicator

Features

- Fast power on: 10 seconds
- 100 hours of continuous use before recharging
- Backlight display allows you to work in remote areas
- Forget expensive license renewal - DHH805 works with HART® DDs that you can download free of charge directly from the HART-Foundation website
- 2GB SD memory will allow you to store as many HART® DDs as needed (up to 1000) along with 200 separate device configuration files



The ABB DHH805 is a universal portable configuration tool that allows easy parameterisation of ABB and third party HART® instruments. As a full function HART® communicator, the DHH805 supports universal, common practice, and device specific commands for commissioning, configuration, and maintenance operations.

